

uFace 800

Multi-Biometric Time Attendance and Access Control Terminal



uFace800 facial multi-biometric time & attendance and access control terminal supports up to 3,000 face templates, 4,000 fingerprint templates and 10,000 cards (optional).

With ZKTeco latest hardware platform and algorithm, it offers brand new UI and user-friendly operation interface to provide smooth user experience.

With advanced face algorithm and multi-biometric verification technology, the terminal's security level of verification is significantly enhanced.

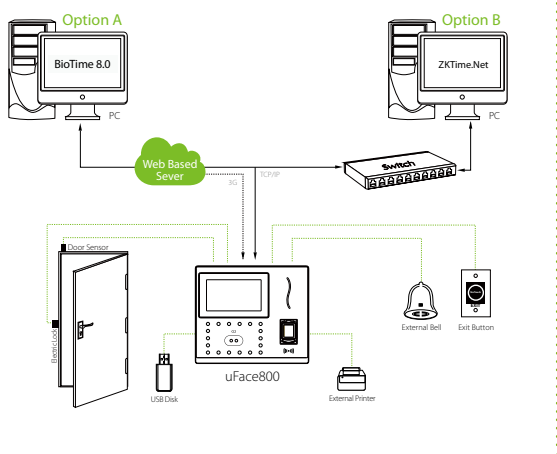
Features

- 3,000 face and 4,000 fingerprint templates
- Multi-language
- High verification speed
- Advanced and user-friendly UI
- Optional built-in battery backup, providing approximately 4 hours of continuous operation
- New Framework firmware, easy to extend functions and customize client's requirements
- One face template is registered for one user only
- Able to detect whether the face is an actual face or a photo, enhancing the security level of verification

Specifications

| | |
|---|--|
| | uFace800 |
| Display | 4.3-Inch Touch Screen |
| Face capacity | 3,000 |
| Fingerprint capacity | 4000 |
| Card capacity | 10,000(optional) |
| Logs capacity | 100,000 |
| Communication | TCP/IP, USB Host, WiFi (optional) |
| Standard Functions | Automatic Status Switch, Self-Service Query, Work Code, SMS, DST, T9 Input, 9 Digit User ID, Scheduled Bell, Photo ID, Wiegand Out |
| Optional Functions | ID/Mfire/HID Card, External Printer and Bell, 3G, ADMS, 2000 mAh Backup Battery |
| Power Supply | 12V 3A |
| Operating Temperature | 0 °C- 45 °C |
| Operating Humidity | 20%-80% |
| Dimensions(Length*Width*Thickness) | 193.6 × 165 × 111mm |
| Package Weight(KG) | 1.87 |

Configuration



What's in the Box

